



EMPOWERING PROCESS MANAGEMENT

High Temperature Cables



CONTENTS

PTFE Insulated Wire & Cables	3
Wire Size As Per Mil – W - 16878 / NEMA HP-3.....	4
Type of PTFE WIRES	5
PTFE Insulated Hook Up Wire	
PTFE Insulated Power Cables	
PTFE Insulated Instrumentation Cables	
PTFE Insulated Multi Core Shielded cables	
PTFE Insulated RTD Cables	
PTFE Insulated Thermocouple Cables	
Fiber Glass Wires And Cables.....	6
Rubber Cables.....	7
Rubber Cable Applications	8
Silicone Rubber Cables	
TTT Insulated Silicone Wires for LED Lights	9
Silicone Insulated Wires	10
Fiber Glass Jacketed Silicone Wires	11
Multi Cores / Multi pairs Silicone Cables	12
CERTIFICATE.....	13

PTFE INSULATED WIRE & CABLES



PTFE Cables have outstanding mechanical & electrical properties. They are heat resistant and have its application for temperature range from **-65 °C to 260 °C**.

In most adverse industrial conditions, where chemical fumes & other liquids make all other types of cables are vulnerable, PTFE polymer becomes an excellent solution as it is chemically inert to most of industrial chemicals. Its outstanding dielectric properties even at high elevated temperatures make it suitable for harsh industrial applications.

ELTEC PTFE wires conforms to US Military **MIL – W – 16878** and Indian defense specifications **JSS 51034.92**.

As per these standards, PTFE wires are classified in three main working voltage grades.

GRADE	SPARK TESTING	DIE ELECTRIC TESTING
ET (250 V)	2500 V AC	1500 V AC
E (600 V)	3400 V AC	2000 V AC
EE (1000 V)	5000 V AC	3000 V AC

APPLICATIONS	PRODUCT FEATURES
<ul style="list-style-type: none"> Hook up wires for high temperature panels Equipment for Aircraft, Defense, Satellite & Radar High Performance Motors, Transformers & Rectifiers Wire Harness assembly 	<ul style="list-style-type: none"> Continuous use up to 260 °C Intermittent use up to 300 °C High dielectric values resulting in excellent space & weight saving Inert to most chemicals & fluids even at elevated temperature & pressure
<ul style="list-style-type: none"> Electronics & Communication Equipment Process Instrumentation 	<ul style="list-style-type: none"> Unaffected by oils, lubricants & hydraulic fluids Non flammable, non toxic, resistant to solder iron damage
<ul style="list-style-type: none"> Medical & Scientific Instruments Sensors, Load Cells & Pressure Transducers Wiring for Heaters, Ovens & Furnace Thermocouple & RTD Cables 	<ul style="list-style-type: none"> Suitable for high frequency operation Immune to algae, fungus & water absorption Resistance to UV resistance & stress creaking High strain & abrasion resistance

PRODUCT SPECIFICATIONS:

Conductor	Soft Annealed silver plated or nickel plated copper wires as per MIL – 16878D. Refer Table
Core Insulation	Spirally Wrapped PTFE Tape and Sintered
No. of core	Single or Multi core
Construction	Twisted for Multi core cables
Outer Sheath	Spirally Wrapped PTFE Tape and Sintered
Screening	Silver Plated Copper wire or SS Wire



ELTEC CABLES & INSTRUMENTS

16, Bhaktinagar Station Plot, Rajkot-360 002. INDIA.

Tel. : +91 281 2480400 URL : www.thermocouplewire.co.in

E-mail : eltecinc@gmail.com | sales@thermocouplewire.co.in

WIRE SIZE AS PER MIL – W - 16878 / NEMA HP-3

Size In AWG	No. of Strands Dia. of each Strand in mm	Cross Sectional Area of Conductor In mm	Conductor Dia. (Nom.) In mm	Conductor Resistance (D.C) per 1000 Mtr. At 20 °C in Ohms (Max)	Elongation % (Min)	Over all diameter of Insulated wire in mm						Max. Current Rating In Amps.
						For 250 V AC Grade OR 'ET'		For 600 V AC Grade OR 'E'		For 1000 V AC Grade OR 'EE'		
						(Min)	(Max)	(Min)	(Max)	(Min)	(Max)	
32(1)	1/0.20	0.0324	0.200	557.7	5.5	-	-	0.64	0.86	0.86	1.07	-
30(1)	1/0.25	0.0507	0.250	356.4	9.0	0.51	0.61	0.67	0.86	0.91	1.12	2.0
28(1)	1/0.32	0.0806	0.320	224.4	9.0	0.58	0.69	0.74	0.94	0.99	1.19	3.0
26(1)	1/0.40	0.1282	0.400	140.9	9.0	0.66	0.76	0.81	1.02	1.07	1.27	4.0
24(1)	1/0.51	0.2047	0.510	88.4	15.0	0.76	0.86	0.91	1.12	1.17	1.37	5.0
22(1)	1/0.64	0.3243	0.640	56.1	20.0	0.86	1.02	1.04	1.27	1.30	1.52	6.0
20(1)	1/0.81	0.5168	0.810	34.7	20.0	1.07	1.17	1.22	1.42	1.47	1.68	8.0
30(7/38)	7/0.10	0.0568	0.310	332.3	5.5	0.56	0.66	0.71	0.91	0.97	1.17	3.0
28(7/36)	7/0.13	0.0887	0.380	210.5	5.5	0.64	0.74	0.79	0.99	1.04	1.25	3.5
26(7/34)	7/0.16	0.1409	0.480	133.7	9.0	0.74	0.84	0.89	1.09	1.14	1.35	4.0
24(7/32)	7/0.20	0.2270	0.610	83.2	9.0	0.86	0.97	1.02	1.22	1.27	1.47	6.0
22(7/30)	7/0.25	0.3547	0.760	52.5	13.5	1.02	1.12	1.17	1.37	1.42	1.63	7.0
20(7/28)	7/0.32	0.5630	0.970	33.0	13.5	1.2	1.32	1.37	1.58	1.63	1.83	9.0
18(7/26)	7/0.40	0.8969	1.220	20.7	13.5	-	-	1.63	1.88	1.88	2.13	15.0
26(19/38)	19/0.10	0.1540	0.510	126.7	5.5	0.74	0.84	0.89	1.09	1.14	1.35	4.0
24(19/36)	19/0.13	0.2407	0.640	80.2	9.0	0.86	0.97	1.02	1.22	1.27	1.47	6.0
22(19/34)	19/0.16	0.3820	0.810	49.8	9.0	1.02	1.12	1.17	1.37	1.42	1.63	7.0
20(19/32)	19/0.20	0.6162	1.020	30.3	9.0	1.22	1.32	1.37	1.58	1.63	1.83	9.0
18(19/30)	19/0.25	0.9627	1.270	19.1	13.5	-	-	1.63	1.88	1.88	2.13	15.0
16(19/29)	19/0.29	1.2293	1.450	14.9	13.5	-	-	1.85	2.21	2.11	2.41	18.0
15(19/28)	19/0.32	1.5272	1.600	12.5	13.5	-	-	2.00	2.23	2.20	2.42	21.0
14(19/27)	19/0.36	1.9412	1.830	9.5	13.5	-	-	2.24	2.59	2.49	2.90	23.0
12(19/25)	19/0.45	3.0848	2.310	6.0	13.5	-	-	2.27	3.07	2.97	3.38	35.0
11(19/24)	19/0.50	3.7320	2.500	5.0	13.5	-	-	2.91	3.26	3.16	3.56	40.0
10(19/22)	19/0.64	6.1147	3.200	3.0	13.5	-	-	-	-	3.86	4.26	45.0
16(37/32)	37/0.20	1.2000	1.400	15.0	13.5	-	-	1.90	1.95	1.90	2.25	18.0
14(37/30)	37/0.25	1.8886	1.750	10.0	13.5	-	-	2.25	2.37	2.35	2.65	25.0
12(37/28)	37/0.32	2.9742	2.240	6.5	13.5	-	-	2.79	2.89	2.84	3.22	33.0
10(37/26)	37/0.40	4.7397	2.820	3.9	13.5	-	-	3.23	3.58	3.48	3.89	43.0
08(133/29)	133/0.29	8.6054	4.290	2.5	13.5	-	-	-	-	5.06	5.56	50.0
06(133/27)	133/0.36	13.5889	5.410	1.4	13.5	-	-	-	-	6.20	6.93	60.0
04(133/25)	133/0.45	21.5900	6.750	1.2	13.0	-	-	-	-	7.75	8.40	75.0
02(133/23)	133/0.57	33.9514	8.550	-	13.0	-	-	-	-	9.75	10.70	100.0
0(133/21)	133/0.71	52.7749	10.650	-	-	-	-	-	-	11.85	12.80	135.0



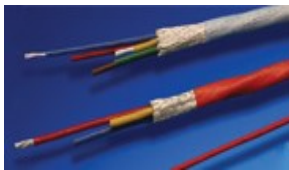
PTFE INSULATED HOOK UP WIRE:

ELTEC PTFE Insulated hook- up wires are used extensively for both electrical and electronic equipments. Hook- up wires are required to perform in increasingly critical environments. Cost effective production methods necessitate uniform wire handling characteristics, such as **strip ability, strand uniformity, precise dimension and permanent colors**.



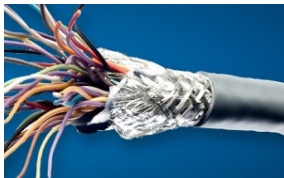
PTFE INSULATED POWER CABLES:

ELTEC PTFE Insulated Power Cables are used for critical high temperature Industrial applications near boilers, furnaces, ovens etc. in processing plants. PTFE wires normally come with **silver plated copper wire conductors (190°C)** or **nickel plated copper wire conductors (260°C on request)**.



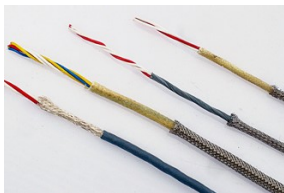
PTFE INSULATED INSTRUMENTATION CABLE

ELTEC PTFE Instrumentation Cable products are used for signal and energy transmission with minimum interference, and they are sunlight, heat, and moisture resistant means they can survive in some of the toughest conditions.



PTFE INSULATED MULTICORE SHIELDED CABLE

ELTEC PTFE Insulated Multi Core Shielded cables are specially designed for its application in electronics & communication equipments, Various equipments for satellite, defense, Radar & Space applications.



PTFE INSULATED RTD CABLE

ELTEC PTFE Insulated RTD CABLES are generally used to transmit signal from RTD sensor to control unit.

Multi stranded SPC conductors are used and are available in 2 core 3 core, 4 core, 6 core, 8 core or even more as per requirement. They are further SPC shielded or outside SS Metal braided as per requirement.



PTFE INSULATED THERMOCOUPLE CABLE

THERMOCOUPLE CABLES are used to transmit signal from Thermocouple sensor to control unit. **J, K, T, E, N, R, S etc. type of Thermocouple & Extension grade cables.** They are available in flat & twisted pair construction. They can be further shielded or outside SS Metal braided as per requirement.



ELTEC CABLES & INSTRUMENTS

16, Bhaktinagar Station Plot, Rajkot-360 002. INDIA.

Tel. : +91 281 2480400 URL : www.thermocouplewire.co.in

E-mail : eltecinc@gmail.com | sales@thermocouplewire.co.in

FIBER GLASS WIRES AND CABLES



FIBER GLASS WIRES & CABLES are for high temperature applications which has an outstanding and unique combination of electrical, thermal, mechanical & chemical properties. Cable conductors like annealed bare or tinned copper are closely braided with FIBER GLASS Yarn and impregnated with high temperature impregnation.

They are normally recommended for continuous use from **130 to 180 °C** with impregnation and up to **500°C** without impregnation. FIBER GLASS WIRES are ideal for general application requiring moderate abrasion, moisture resistance & high temperature resistance. It has got superior thermal properties as it dissipates heat faster and high thermal endurance as it cannot be burned.

ELTEC FIBER GLASS WIRES are manufactured from **0.5 sq.mm to 50 sq.mm**

APPLICATIONS	PRODUCT FEATURES
<ul style="list-style-type: none"> Hook up wires for high temperature panels Wiring for Heaters, Ovens & Furnace Transformer winding Power Cables for Boiler & various High Temperature Processing Equipments High Temperature Motors, Transformers & Rectifiers 	<ul style="list-style-type: none"> Continuous use up to 450 °C without impregnation Good Thermal Properties as it dissipates heat faster Flame Retardant Superior Abrasion Resistance High Die Electric strength and low die electric constant

PRODUCT SPECIFICATIONS:

Conductor	Annealed Bare Copper, Tin Plated Copper, Nickel Plated Copper, Copper – SS Mix conductor
Core Insulation	Braided Fiber Glass Yarn with High Temperature Impregnation
No. of core	Single or Multi core
Construction	Parallel or Twisted
Outer Sheath	Braided Fiber Glass Yarn with High Temperature Impregnation
Outside Jacket	Outside SS Metal braid

- Optional conductor type i.e. annealed bare copper, tin plated or nickel plated copper , Copper – SS Mix conductor depending upon the client's requirement
- Impregnation maintained up to **200 °C**. Option for supply of wire without impregnation for continuous operation at elevated temperature.
- Other sizes in SWG and also different construction in other stranded sizes are available on request



ELTEC CABLES & INSTRUMENTS

16, Bhaktinagar Station Plot, Rajkot-360 002. INDIA.

Tel. : +91 281 2480400 URL : www.thermocouplewire.co.in

E-mail : eltec.in@gmail.com | sales@thermocouplewire.co.in

RUBBER CABLES:



ELTEC is offering RUBBER CABLES with different type of elastomeric sheathing suitable for various Industrial needs. Technologically advanced polymers like EPDM, CSP, CPE, PCP, NBR, EVA, Silicone halogen free, non toxic, heat, oil resistant and fire retardant compounds are specially formulated to manufacture these SPECIAL RUBBER CABLES.

APPLICATIONS

- Power Cables
- Mining Cables
- Welding Cables
- Flexible Trailing Cables
- Elastomeric Instrumentation Cables
- Rubber Cables for NUCLEAR POWER PLANTS

PRODUCT FEATURES

- Confirms to IS:9968, BS 6500, BS 7919, IEC 60502
- Wide temp. range from -55 °C to 200 °C
- Excellent resistance to flame, heat & electrical
- Excellent resistance to grease, oil & chemicals
- Better flexibility & outstanding toughness
- Immune to agene, fungus

Material	Maximum Working Temperature ° C (° F)	Max. conductor temp for short circuit rating ° C (° F)	Minimum Working Temperature ° C (° F)
ETHYLENE PROPYLENE RUBBER (EPR)	90 (194)	250 (482)	-50 (-58)
POLY CHLORPRENE (PCP)	90 (194)	200 (392)	-40 (-40)
CHLOROSULPHONATED POLYETHYLENE (CSP)	90 (194)	250 (482)	-35 (-31)
SILICONE RUBBER	180 (356)	350 (662)	-55 (-67)
STYRENE BUTADIENE RUBBER (SBR)	60 (140)	200 (392)	-55 (-67)
Natural Rubber (VIR & TRS)	60 (140)	200 (392)	-55 (-67)
NITRILE BUTADIENE RUBBER (NBR)	90 (194)	200 (392)	-30 (-22)

PRODUCT SPECIFICATIONS:

Conductor	Annealed Tinned Multi stranded flexible Copper wires (Class 5) confirming to IS:8130 OF 1984
Core Insulation	General Service elastomer compound type IE1, Heat Resisting elastomer compound type IE 2 / IE3, Silicone Rubber Type IE 5, Specially formulated material are VIR/TRS / EPR / SILICONE / EVA / PCP / CSP / CPE / NBR
No. of core	1, 2, 3 or more
Construction	Twisted
Fillers	Elastomer based fillers compatible with Insulating Material
Outer Sheath	General purpose sheath Type SE1/SE2 or Heavy Duty Sheath type SE 3 / SE 4, Specially formulated material VIR/TRS / EPR / SILICONE / EVA / PCP / CSP / CPE / NBR
Outer SS Metal braid	SS 304 L bright mirror finished braid



ELTEC CABLES & INSTRUMENTS

16, Bhaktinagar Station Plot, Rajkot-360 002. INDIA.

Tel. : +91 281 2480400 URL : www.thermocouplewire.co.in

E-mail : eltecinc@gmail.com | sales@thermocouplewire.co.in

RUBBER CABLE INDUSTRIAL APPLICATIONS

FLEXIBLE TRAILING CABLES	<i>Reeling unreeling, Trailing, Festooning, Mobile Machines, Cranes, Coal Handling and Conveyors</i>
MINING CABLES	<i>Open cast, Coal or other mines and mining machines</i>
THERMAL POWER PLANTS	<i>For coal handling plants, flexible power and control application</i>
CABLES FOR STEEL PLANTS	<i>Flexible and high temp withstanding cables for furnace, melting shops, material handling</i>
WIND ENERGY	<i>Flexible cables for power and control for Wind Mill generator connection</i>
FIRE SURVIVAL CABLES	<i>Fire Survival for 3 Hrs or 20 Min</i>
SHIP WIRING	<i>As per IEC specs and Naval specs DGS or DEFSTAN, NES</i>
OFFSHORE and ONSHORE	<i>For Platforms and Rigs as per IEC and BS or NEK specs</i>
SHORE SUPPLY AND GENERATOR CABLES	<i>For charging of ship batteries and supply from mobile generators</i>
MOTOR COIL LEADS	<i>Elastomeric and Silicon as per IS, BS, or OEM specifications</i>
HIGH TEMP CABLES	<i>Silicon insulated, glass fiber braided or unbraided</i>
PUMP CABLES	<i>For Water , submersible and sewerage pumps</i>
CABLES FOR RAILWAYS	<i>Coach wiring, Metro railway</i>
PANEL WIRING	<i>For superior flexibility, high power high temp zone, polluted or moist atmospheres</i>
BATTERY CABLES	<i>For High current and long life</i>
LOW TEMPERATURE INSTALLATIONS	<i>Suitable for subzero temperature installations and operations</i>
MISC. APPLICATIONS	<i>Outdoor High mast lighting, Site power supply, White goods, Oil or Chemical resistant</i>



ELTEC CABLES & INSTRUMENTS

16, Bhaktinagar Station Plot, Rajkot-360 002. INDIA.
 Tel. : +91 281 2480400 URL : www.thermocouplewire.co.in
 E-mail : eltecinc@gmail.com | sales@thermocouplewire.co.in

Silicone Rubber Insulated 3T Wires for LED Lights



ELTEC is offering **SILICONE RUBBER CABLES** especially for **LED light application with TTT Conductor**. Stranded tinned copper wires would be tinned twice and bunched suitably. Silicone Rubber have fine electrical properties, good chemical stability, flame retardant, low smoke emission and excellent resistance to heat and cold.

Silicone rubber has exceptional weather resistance. Ozone created by corona discharge does not deteriorate silicone rubber. Thus, silicone rubber can be exposed to wind, rain and UV rays for longer periods without any change in its physical properties.

APPLICATIONS	PRODUCT FEATURES
<ul style="list-style-type: none"> LED Lights & Air conditioning Generators, Alternators, Inductors & Transformers Industrial Furnaces, Ovens & Thermal Equipments Ventilators & Other Medical Equipments Processing Ind. Steel, Cement, Glass etc. Electric Motors 	<ul style="list-style-type: none"> Confirms to IEC 60092, 60331, 60332-1, 60332-3 Wide temp. range from -55 °C to 200 °C Excellent resistance to flame, heat & electrical Excellent resistance to grease, oil & chemicals Better flexibility & outstanding toughness Weather & Moisture Resistance

PRODUCT SPECIFICATIONS:

Conductor Material	Annealed Triple Tinned Plated flexible Copper
Size of wire in sq.mm	7 * 0.193 (7 strands of 0.193 mm), OD: 0.58 mm
Core Insulation	Silicone Rubber Insulation as per Type IE-5 of IS: 6380-1984, Insulation Thickness 0.45 mm
Core Colors	Red, Orange, Black, Blue, Green, Yellow, White, Brown or any other as per client's requirement

- Other sizes in SWG and also different construction in other stranded sizes are available on request
- Color as per customer's requirement

ELECTRICAL PROPERTIES:

Voltage Grade 1100 V

Spark Test 1 KV RMS



ELTEC CABLES & INSTRUMENTS

16, Bhaktinagar Station Plot, Rajkot-360 002. INDIA.

Tel. : +91 281 2480400 URL : www.thermocouplewire.co.in

E-mail : eltecinc@gmail.com | sales@thermocouplewire.co.in

Silicone Rubber Insulated Tinned Copper Wires



ELTEC is offering **SILICONE RUBBER CABLES** with different type of conductors such as Tin Plated Copper, Nickel Plated Copper, Silver Plated Copper, Bare Copper etc. Silicone Rubber have fine electrical properties, good chemical stability, flame retardant, low smoke emission and excellent resistance to heat and cold.

Silicone rubber has exceptional weather resistance. Ozone created by corona discharge does not deteriorate silicone rubber. Thus, silicone rubber can be exposed to wind, rain and UV rays for longer periods without any change in its physical properties.

APPLICATIONS	PRODUCT FEATURES
<ul style="list-style-type: none"> • <i>Electric Motors</i> • <i>Generators, Alternators, Inductors & Transformers</i> • <i>Industrial Furnaces, Ovens & Thermal Equipments</i> • <i>Ventilators & Other Medical Equipments</i> • <i>Processing Ind. Steel, Cement, Glass etc.</i> • <i>Lightning & Air Conditioning</i> 	<ul style="list-style-type: none"> • <i>Confirms to IEC 60092, 60331, 60332-1, 60332-3</i> • <i>Wide temp. range from -55 °C to 200 °C</i> • <i>Excellent resistance to flame, heat & electrical</i> • <i>Excellent resistance to grease, oil & chemicals</i> • <i>Better flexibility & outstanding toughness</i> • <i>Weather & Moisture Resistance</i>

PRODUCT SPECIFICATIONS:

Conductor Material	<i>Annealed Tinned Multi stranded flexible Copper wires (Class 5) confirming to IS:8130 of 1984</i>
Size of wire in sq.mm	<i>0.50 sq.mm to 250 sq.mm or even more</i>
Core Insulation	<i>Silicone Rubber Insulation as per Type IE-5 of IS: 6380-1984</i>
Core Colors	<i>Red, Orange, Black, Blue, Green, Yellow, White, Brown or any other as per client's requirement</i>

ELECTRICAL PROPERTIES:

Voltage Grade	<i>1100 V</i>
High Voltage Test	<i>3 KV for 5 Minutes</i>



ELTEC CABLES & INSTRUMENTS

16, Bhaktinagar Station Plot, Rajkot-360 002. INDIA.

Tel. : +91 281 2480400 URL : www.thermocouplewire.co.in

E-mail : eltecinc@gmail.com | sales@thermocouplewire.co.in

Silicone Rubber Insulated Wires with Fiber Glass Braid



ELTEC SILICONE RUBBER INSULATED CABLES with FIBER GLASS BRAID are used for high temp. applications. It has an excellent die electric properties when burnt and in addition these cables are flame retardant and self extinguishing. These cables are also resistant to fungus, UV radiations, corona discharge, acids and manganese.

Tinned Copper conductors are Insulated by Silicone Rubber and Outer Fiber Glass Braid provides wire form high temperature and abrasion.

APPLICATIONS	PRODUCT FEATURES
<ul style="list-style-type: none"> Lead Wires for Motors & Trasnformers Generators, Alternators, Inductors &Transformers Industrial Furnaces, Ovens & Thermal Equipments Foundries Steel Mills & Glass Factories Food Processing & Packaging 	<ul style="list-style-type: none"> Confirms to IEC 60092, 60331, 60332-1, 60332-3 Wide temp. range from 70 °C to 200 °C Excellent resistance to flame, heat & electrical Resistance to Abrasion & UV Radiation Better flexibility & outstanding toughness Weather & Moisture Resistance

PRODUCT SPECIFICTIONS:

Conductor Material	Annealed Tinned Multi stranded flexible Copper wires (Class 5) confirming to IS:8130 of 1984
Size of wire in sq.mm	0.50 sq.mm to 250 sq.mm
Core Insulation	Silicone Rubber Insulation as per Type IE-5 of IS: 6380-1984
Core Colors	Red, Orange, Black, Blue, Green, Yellow, White, Brown or any other as per client's requirement
Outer Jacket	Fiber Glass Braid with High Temp. Impregnation

- Color as per customer's requirement

ELECTRICAL PROPERTIES:

Voltage Grade 1100 V

High Voltage Test 3 KV for 5 Minutes



ELTEC CABLES & INSTRUMENTS

16, Bhaktinagar Station Plot, Rajkot-360 002. INDIA.

Tel. : +91 281 2480400 URL : www.thermocouplewire.co.in

E-mail : eltecinc@gmail.com | sales@thermocouplewire.co.in

Multi Core Silicone Rubber Cables:



ELTEC is offering SILICONE RUBBER CABLES with different type of conductors such as Tin Plated Copper, Nickel Plated Copper, Silver Plated Copper, Bare Copper etc. Silicone Rubber have fine electrical properties, good chemical stability, flame retardant, low smoke emission and excellent resistance to heat and cold.

Silicone rubber has exceptional weather resistance. Ozone created by corona discharge does not deteriorate silicone rubber. Thus, silicone rubber can be exposed to wind, rain and UV rays for longer periods without any change in its physical properties.

APPLICATIONS	PRODUCT FEATURES
<ul style="list-style-type: none"> • <i>Electric Motors</i> • <i>Generators, Alternators, Inductors & Transformers</i> • <i>Industrial Furnaces, Ovens & Thermal Equipments</i> • <i>Ventilators & Other Medical Equipments</i> • <i>Solenoid Valve</i> • <i>Lightning & Air Conditioning</i> 	<ul style="list-style-type: none"> • <i>Confirms to IEC 60092, 60331, 60332-1, 60332-3</i> • <i>Wide temp. range from -55 °C to 200 °C</i> • <i>Excellent resistance to flame, heat & electrical</i> • <i>Excellent resistance to grease, oil & chemicals</i> • <i>Better flexibility & outstanding toughness</i> • <i>Weather & Moisture Resistance</i>

PRODUCT SPECIFICATIONS:

Conductor	<i>Annealed Tinned Multi stranded flexible Copper wires (Class 5) confirming to IS:8130 of 1984</i>
Core Insulation	<i>Silicone Rubber Insulation as per Type IE-5 of IS: 6380-1984</i>
No. of Core / Pair / Triad	<i>1, 2, 3 or more as per client's requirements</i>
Construction	<i>Twisted</i>
Fillers	<i>Cotton threads or elastomeric based fillers to obtain roundness</i>
Outer Sheath	<i>SILICONE RUBBER as per Type IE-5 of IS: 6380-1984</i>

ELECTRICAL PROPERTIES:

Voltage Grade 1100 V

High Voltage Test 3 KV for 5 Minutes



ELTEC CABLES & INSTRUMENTS

16, Bhaktinagar Station Plot, Rajkot-360 002. INDIA.

Tel. : +91 281 2480400 URL : www.thermocouplewire.co.in

E-mail : eltecinc@gmail.com | sales@thermocouplewire.co.in

CERTIFICATIONS:



Certificate of Registration

This is to certify that

Eltec Cables & Instruments

16, Bhaktinagar Station Plot, Rajkot - 360002 (Gujarat), India.

has been assessed by RICL and found to comply with the requirements of

ISO 9001 : 2015 Quality Management System

For the following activities:

Manufacturer and Exporter of Thermocouple Wires & Cables, RTD Cables, Instrumentation Cables, High Temperature PTFE, Fiber Glass Wires & Cables, Temperature Sensors such as Thermocouple, RTD PT 100 & Thermowell.

This Certificate is Valid from 13/01/2020 Until 12/01/2021

Date of Initial Certification: 13/01/2020
1st Surveillance on or before: 12/12/2020
Ind Surveillance on or before: 12/12/2021
Certification Valid Until: 12/01/2023

**Certificate No.:
20RQ01AH**



www.jas-anz.org/register



Director

Royal Impact Certification Ltd.

Certificate details entered into JAS-ANZ register on 13/01/2020

623, Tower-B, iThum, Plot No. A - 40, Sector - 62, Noida 201301, India.
www.isointernational.org, info@isointernational.org
Phone : +91 120 4113893

This Certificate can be verified at: www.isointernational.org and www.jas-anz.org

This Certificate remains the property of Royal Impact Certification Limited. Must be returned on request or if certificate is withdrawn. Validity of this certificate is subject to successful surveillance audits. RICL is accredited by JAS-ANZ. URL of Joint Accreditation System of Australia & New Zealand- www.jas-anz.org/register

CERTIFICATIONS:



PRODUCT CERTIFICATE
EC Attestation of Conformity

ELTEC CABLES & INSTRUMENTS
Address : 16, BHAKTINAGAR STATION PLOT, RAJKOT - 360002,
GUJARAT - INDIA.

Is in compliance with
Directive
LVD/HVD - 2004/108/EC, 94/9/EC, 2006/95/EC, 2006/42/EC

For The following product
THERMOCOUPLE WIRES,
RTD CABLES,
INSTRUMENTATION CABLES,
HIGH TEMPERATURE PTFE,
FIBER GLASS WIRES & CABLES,
TEMPERATURE SENSORS THERMOCOUPLE,
RTD PT 100.

In accordance with
TCF No. CE/01

The present certificate exclusively refers to the product above identified, in accordance
to TCF submitted in PICL. Any Changes or modification implemented on the mentioned
Product will not be covered by this certificate.

Registration No. PICL/CE/1016/8886
Certificate Issue Date: 22.10.2016
1st Surveillance: 19.2017
2nd Surveillance: 19.2018

Certificate Expire Date: 21.10.2021
4th Surveillance: 19.2020
3rd Surveillance: 19.2019



Head of Certificate



This Certificate of Registration is granted subject to the Regulations approved by the Board.
PROGRESSIVE INTERNATIONAL CERTIFICATIONS LTD.
Office 4, 219, Kensington High Street, Kensington, London, W8 6BD, England.
E-mail: info@picuk.com, Website: www.picuk.com
For current validity of this certificate, Please visit our website



Certificate of Registration
The Governing Board of
Progressive International Certifications Limited
hereby grant to:

ELTEC CABLES & INSTRUMENTS
Address to which this Certificate refers:
16, BHAKTINAGAR STATION PLOT, RAJKOT - 360002,
GUJARAT - INDIA.

RoHS
(Directive - 2011/65/EU)

The certificate of compliance is based on a test (procedure) or an evaluation of the above-mentioned product. This is to certify that
the above-mentioned product is in compliance with the RoHS Directive (2011/65/EU) of the European parliament and
Commission Decision on the Restriction of the certain Hazardous Substances (Lead (pb), Mercury (hg), cadmium (cd),
Hexavalent chromium (Cr), polybrominated biphenyls (PBBs) and polybrominated diphenyl ethers (PBDEs)) in
Electrical and Electronic equipment

Approved Scope to which this Certificate refers
THERMOCOUPLE WIRES & CABLES, RTD CABLES, INSTRUMENTATION CABLES,
HIGH TEMPERATURE PTFE, FIBER GLASS WIRES & CABLES, TEMPERATURE
SENSORS THERMOCOUPLE, RTD PT 100.

Certificate No.: PICL/ROHS/0317/8354
Certificate Issue Date: 02.03.2017
1st Surveillance: 03.2018

Certificate Expire Date: 01.03.2020
2nd Surveillance: 03.2019



Head of Certificate




This Certificate of Registration is granted subject to the Regulations approved by the Board.
PROGRESSIVE INTERNATIONAL CERTIFICATIONS LTD.
Prakruti, Plot No. 03, Sector 21 Kharghar, Navi Mumbai - 410216, India.
Ph: +91 8860091120, E-mail: info@progressiveintl.com, Website: www.progressiveintl.com
For current validity of this certificate, Please visit our website

USE OF ACCREDITATION MARK INDICATES ACCREDITATION IN RESPECT OF THE ACTIVITIES COVERED BY
ACCREDITATION INSTITUTE ASSESSMENT BODY (EUROPE) CERTIFICATION NUMBER 005



ELTEC CABLES & INSTRUMENTS

16, Bhaktinagar Station Plot, Rajkot-360 002. INDIA.

Tel. : +91 281 2480400 URL : www.thermocouplewire.co.in

E-mail : eltecinc@gmail.com | sales@thermocouplewire.co.in